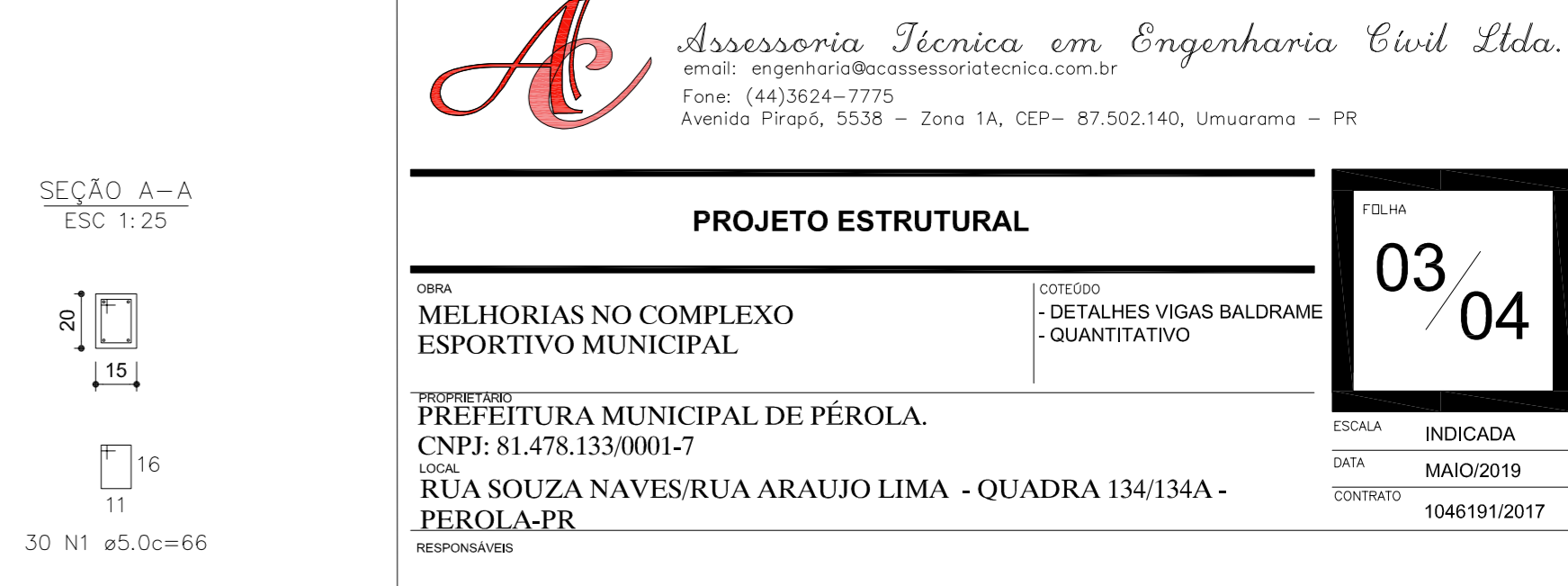
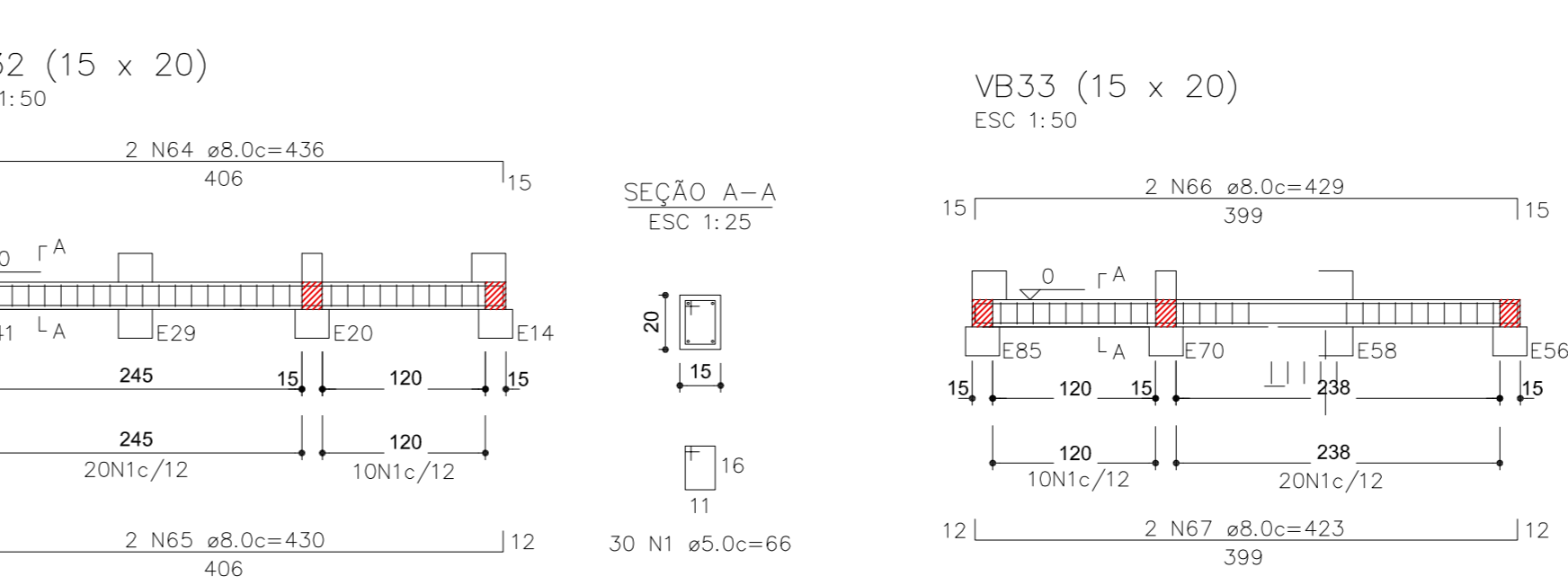
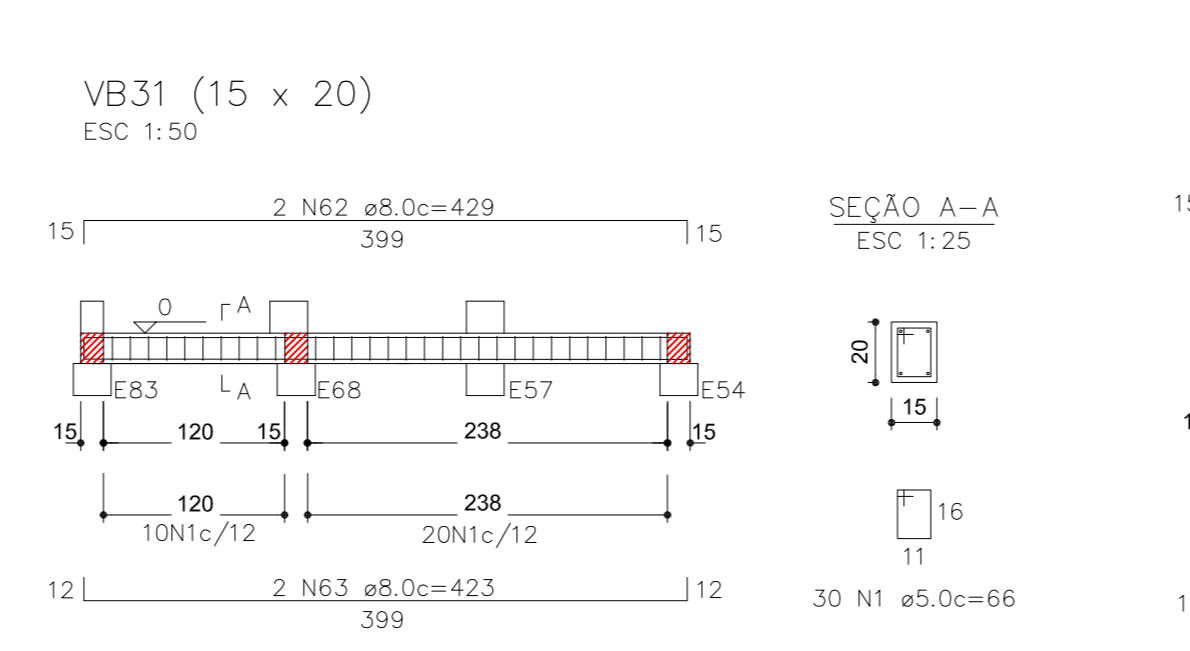
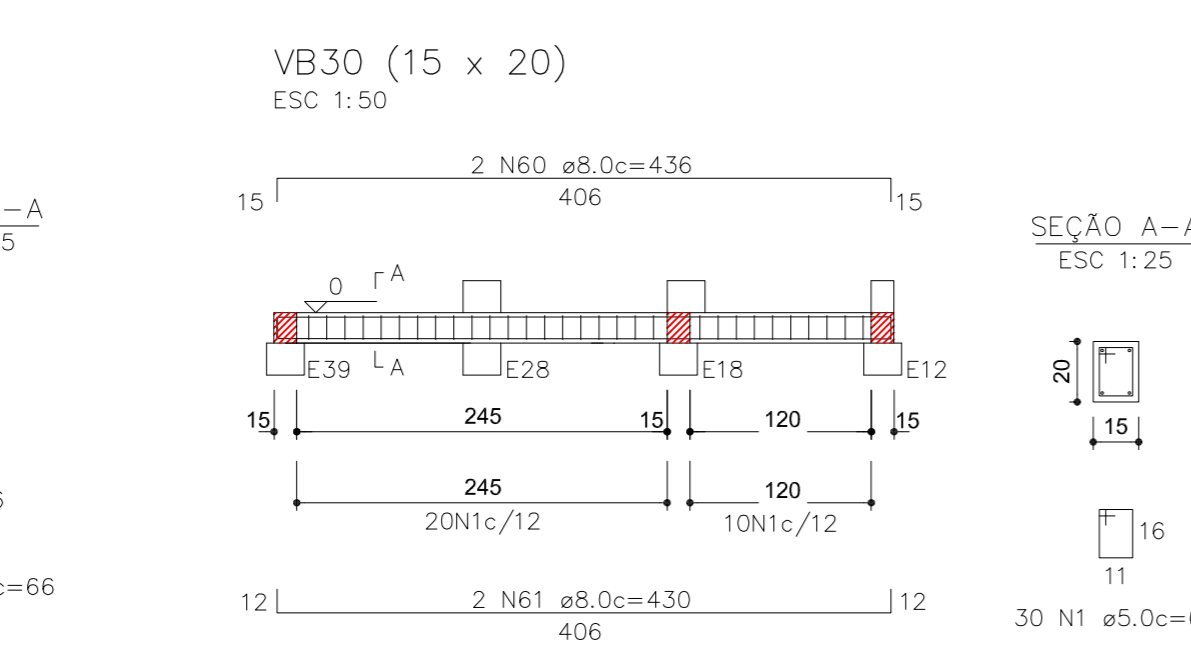
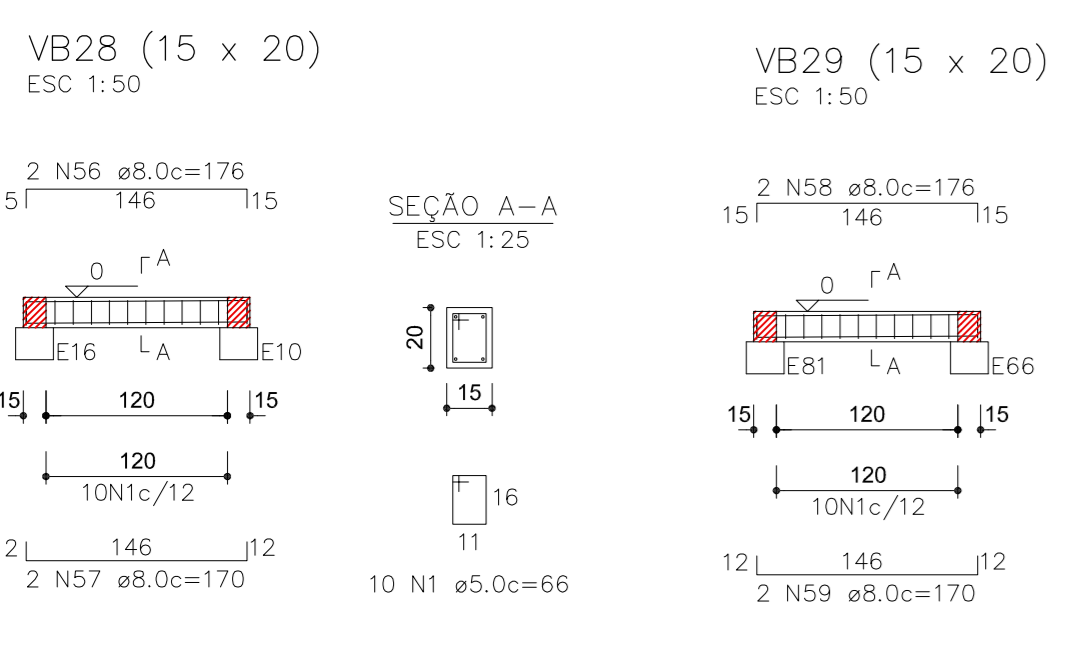
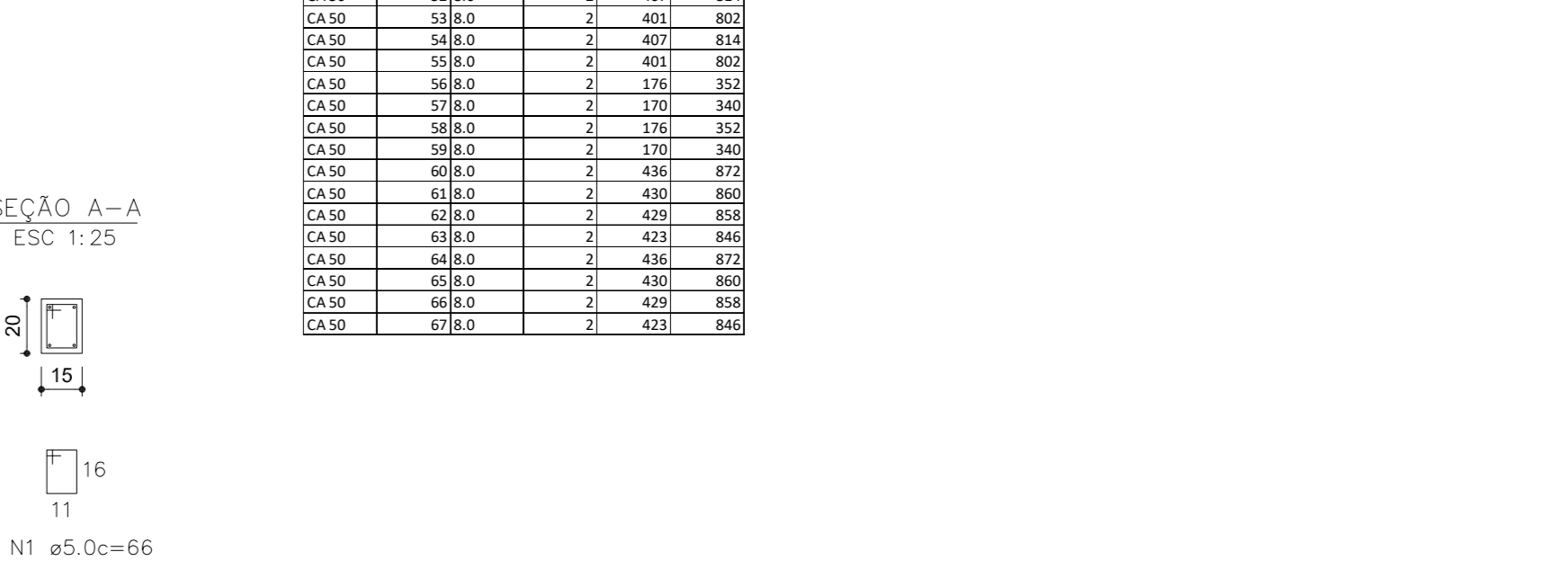
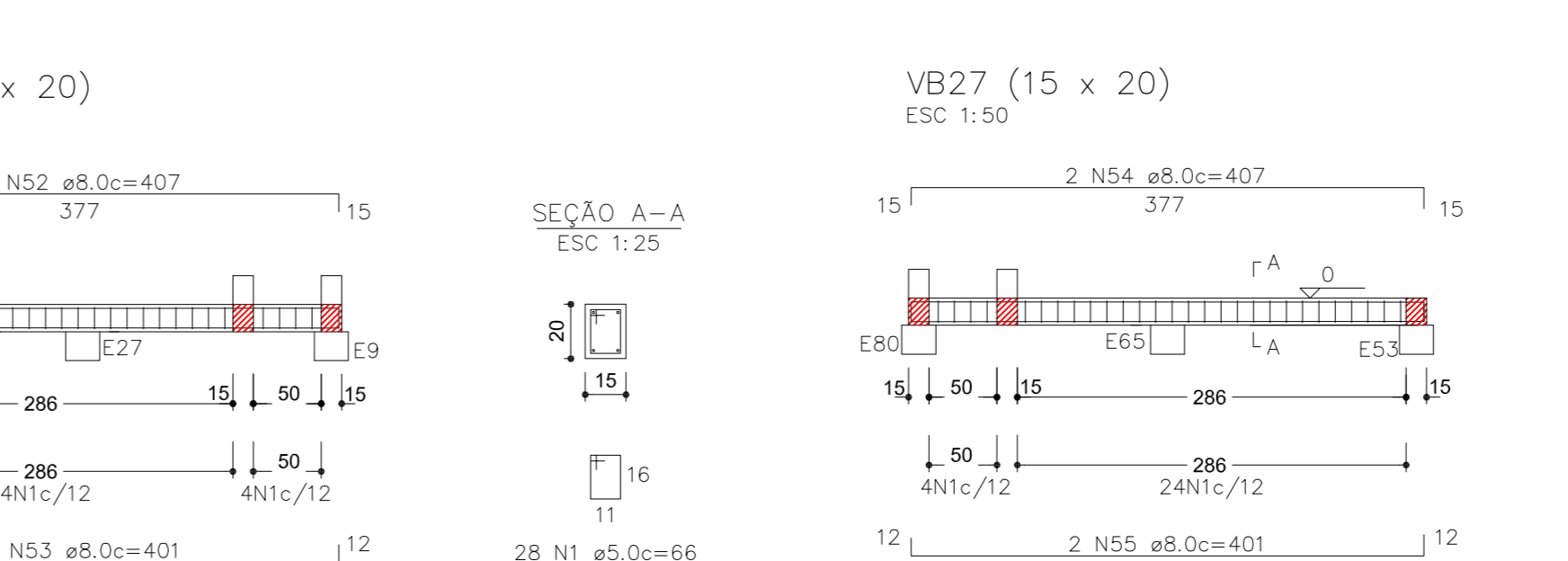
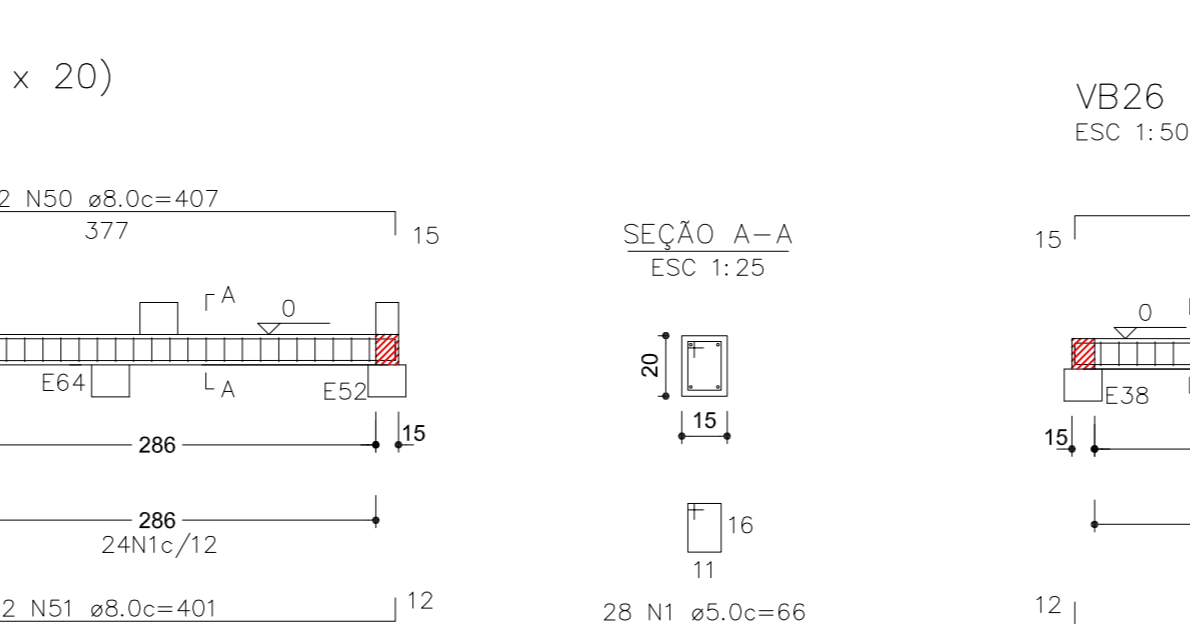
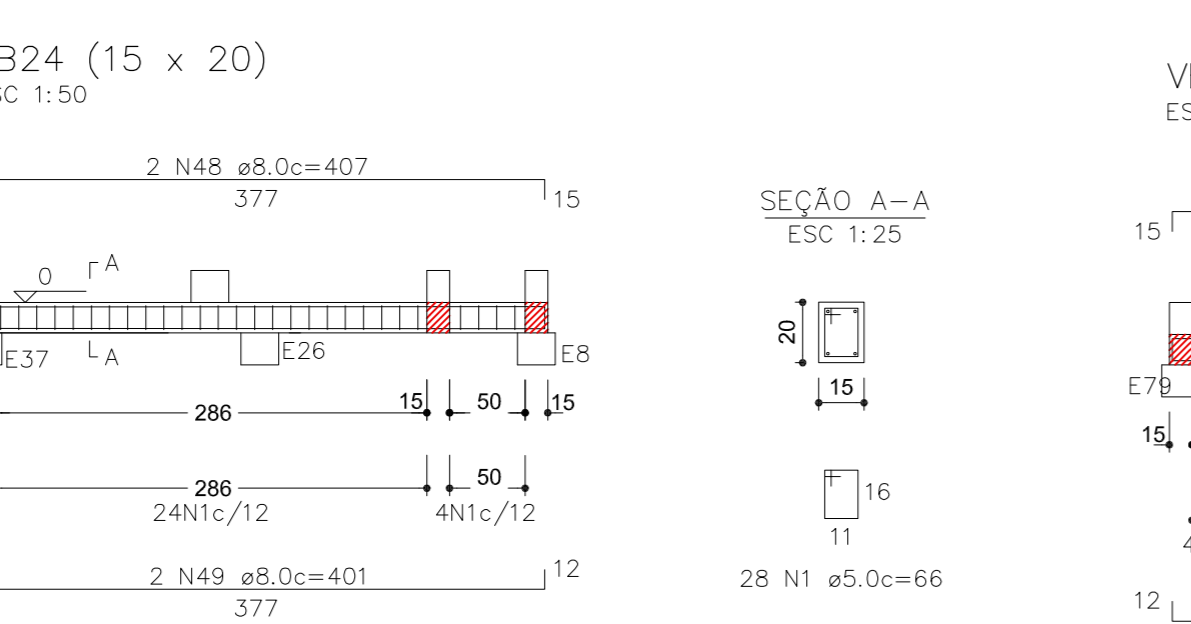
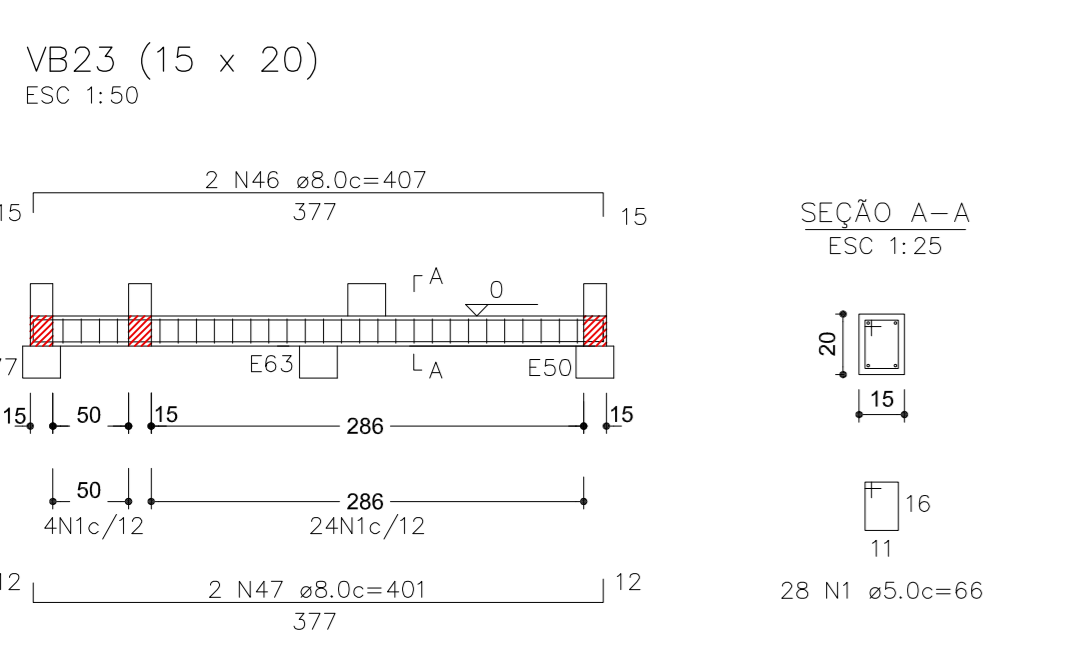
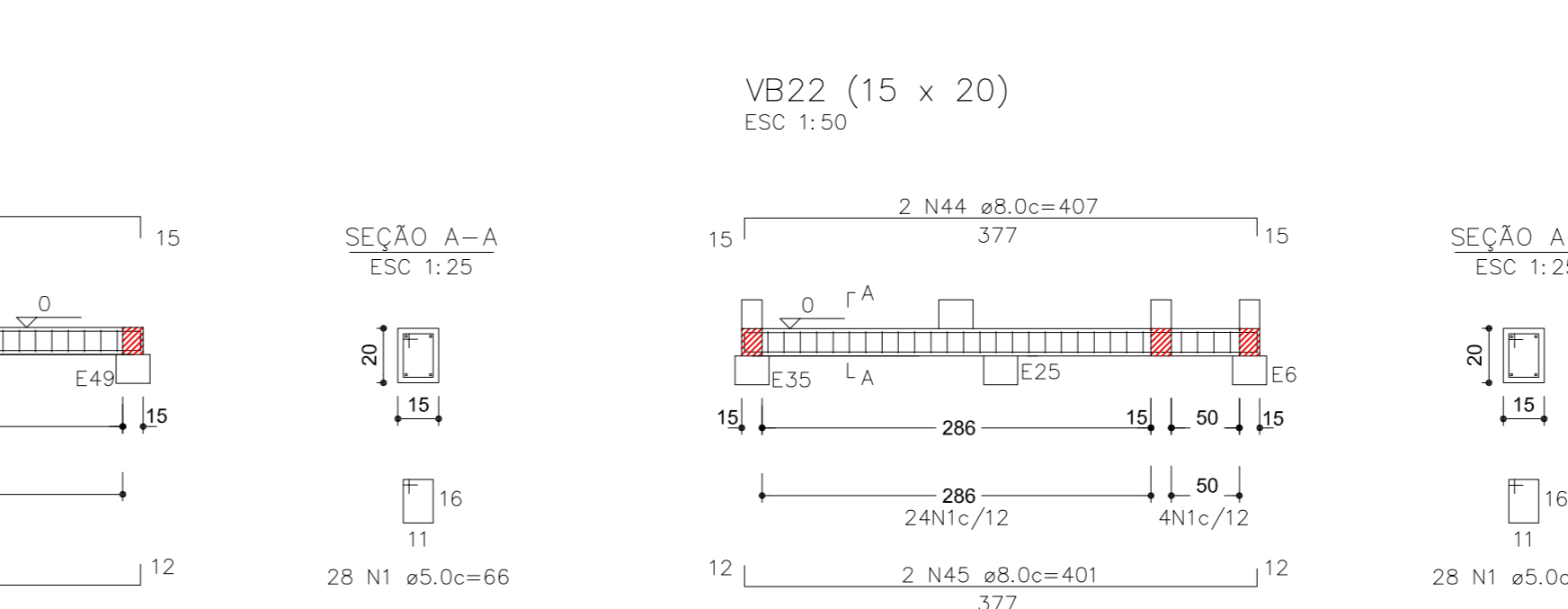
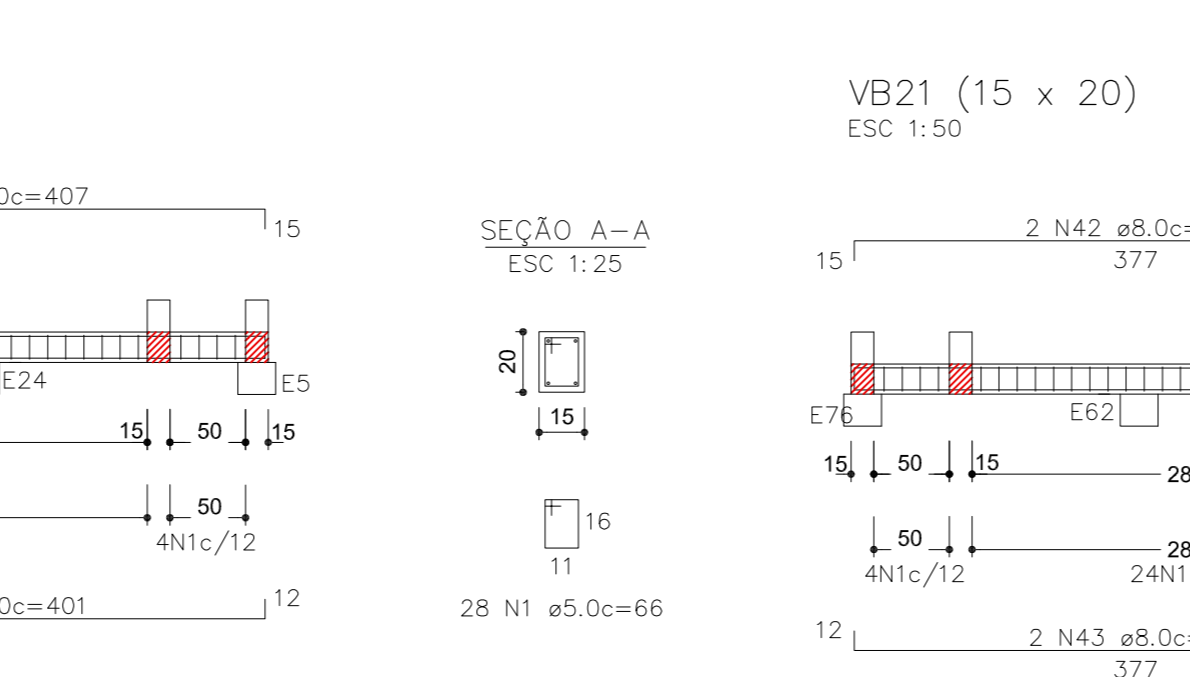
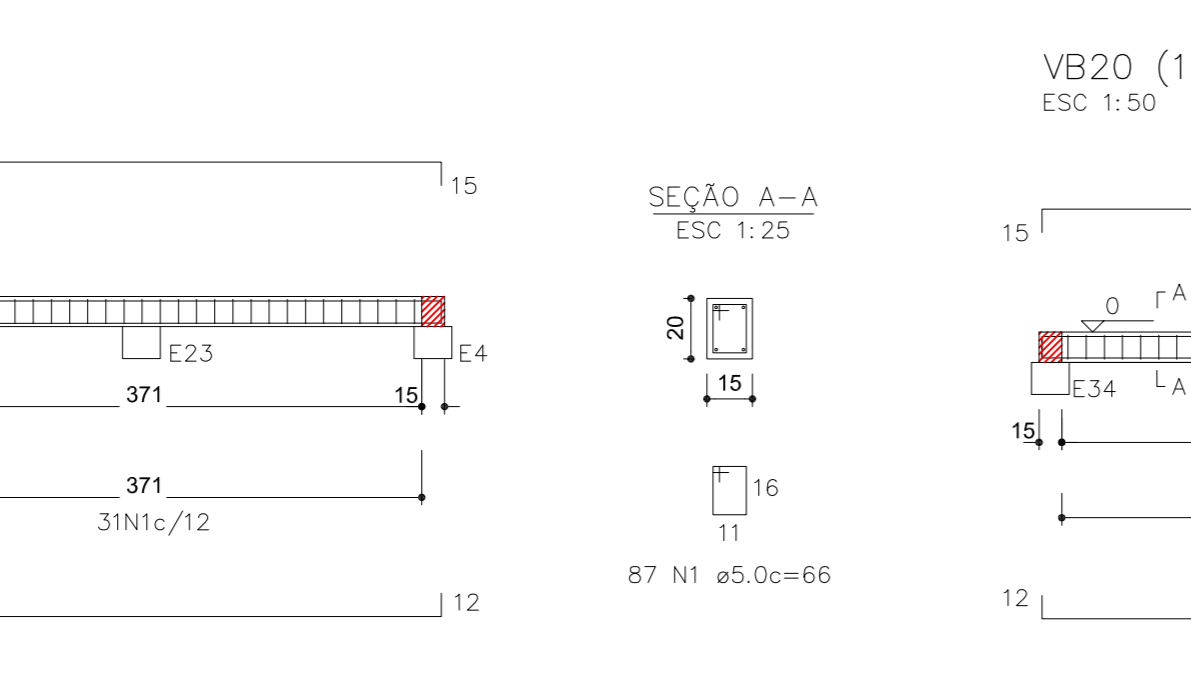
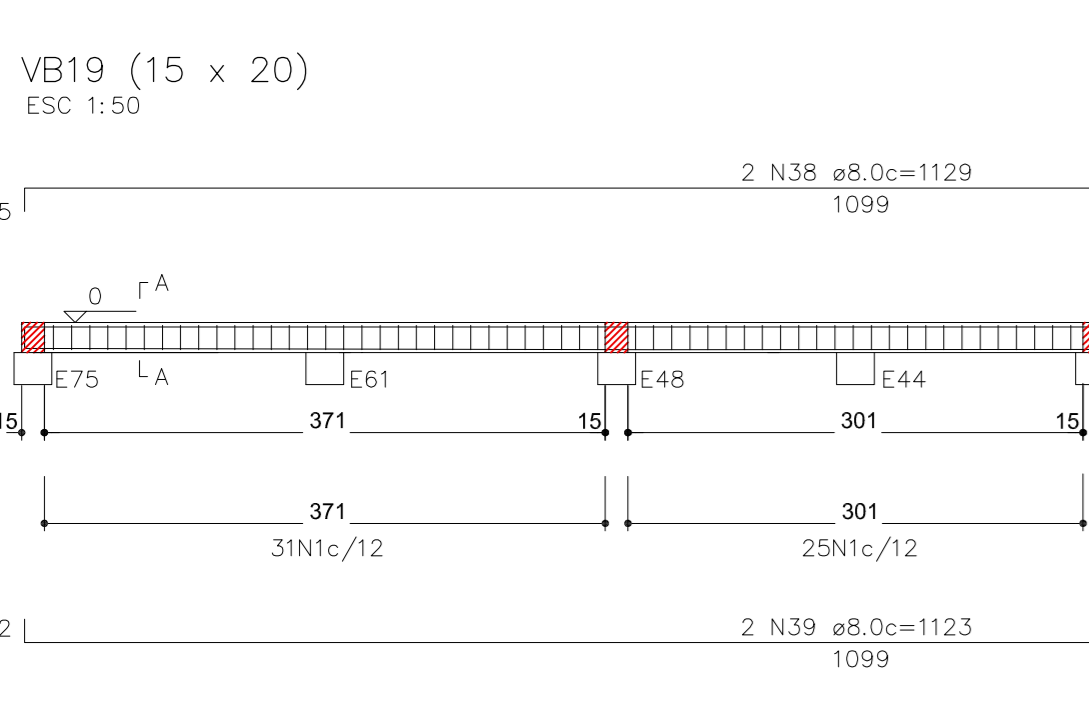


RELAÇÃO DO AÇO						RESUMO DO AÇO				
AÇO	N	DIAM (mm)	QUANT	C. UNIT. (cm)	C. TOTAL (cm)	AÇO	DIAM. (mm)	C. TOTAL (m)	PESO UNIT. (kg)	PESO TOTAL
CA50	15.0	10.0	1295	66	85470	CA 60	5.0	854.70	0.154	131.62
CA50	20.0	12.0	2	446	892	CA 50	8.0	714.96	0.395	282.41
CA50	4.0	8.0	2	731	1462	VOLUME DE CONCRETO (C-25) = 4,37 m³ ÁREA DE FORMA = 58,56 m²				
CA50	6.0	10.0	2	591	1182					
CA50	8.0	12.0	2	591	1182					
CA50	10.0	14.0	2	591	1182					
CA50	12.0	16.0	2	591	1182					
CA50	14.0	18.0	2	591	1182					
CA50	16.0	20.0	2	591	1182					
CA50	18.0	22.0	2	591	1182					
CA50	20.0	24.0	2	591	1182					
CA50	22.0	26.0	2	591	1182					
CA50	24.0	28.0	2	591	1182					
CA50	26.0	30.0	2	591	1182					
CA50	28.0	32.0	2	591	1182					
CA50	30.0	34.0	2	591	1182					
CA50	32.0	36.0	2	591	1182					
CA50	34.0	38.0	2	591	1182					
CA50	36.0	40.0	2	591	1182					
CA50	38.0	42.0	2	591	1182					
CA50	40.0	44.0	2	591	1182					
CA50	42.0	46.0	2	591	1182					
CA50	44.0	48.0	2	591	1182					
CA50	46.0	50.0	2	591	1182					
CA50	48.0	52.0	2	591	1182					
CA50	50.0	54.0	2	591	1182					
CA50	52.0	56.0	2	591	1182					
CA50	54.0	58.0	2	591	1182					
CA50	56.0	60.0	2	591	1182					
CA50	58.0	62.0	2	591	1182					
CA50	60.0	64.0	2	591	1182					
CA50	62.0	66.0	2	591	1182					
CA50	64.0	68.0	2	591	1182					
CA50	66.0	70.0	2	591	1182					
CA50	68.0	72.0	2	591	1182					



Assessoria Técnica em Engenharia Civil Ltda.
 email: engenharia@accessoriatecnica.com.br
 Fone: (44)3624-7775
 Avenida Pirapó, 5538 - Zona 1A, CEP - 87.502.140, Umuarama - PR

PROJETO ESTRUTURAL

OBRA: MELHORIAS NO COMPLEXO ESPORTIVO MUNICIPAL
 LOCAL: RUA SOUZA NAVES/RUA ARAUJO LIMA - QUADRA 134/134A - PEROLA-PR

RESPONSÁVEL: [Assinatura]

ESCALA: INDICADA
 DATA: MAIO/2019
 CONTRATO: 104819/2017

FOLHA: 03/04

MUNICÍPIO DE PEROLA
 EMP. CIV. CREA 24.980/S-PR