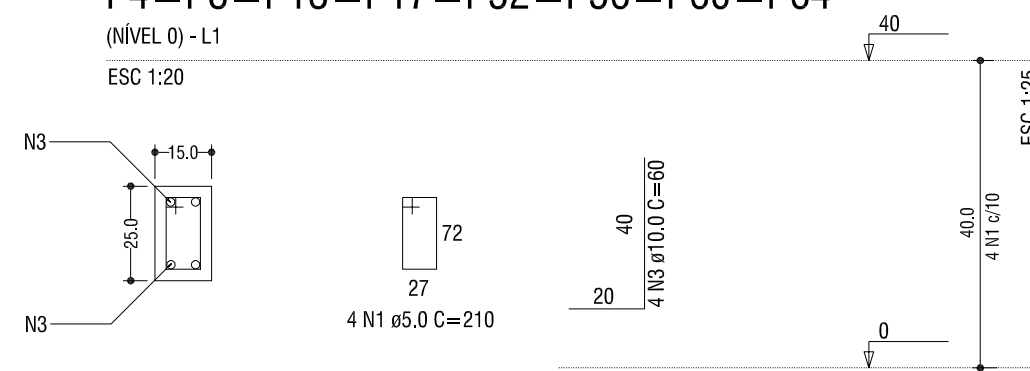


P4=P8=P13=P17=P52=P56=P60=P64

(NÍVEL 0) - L1

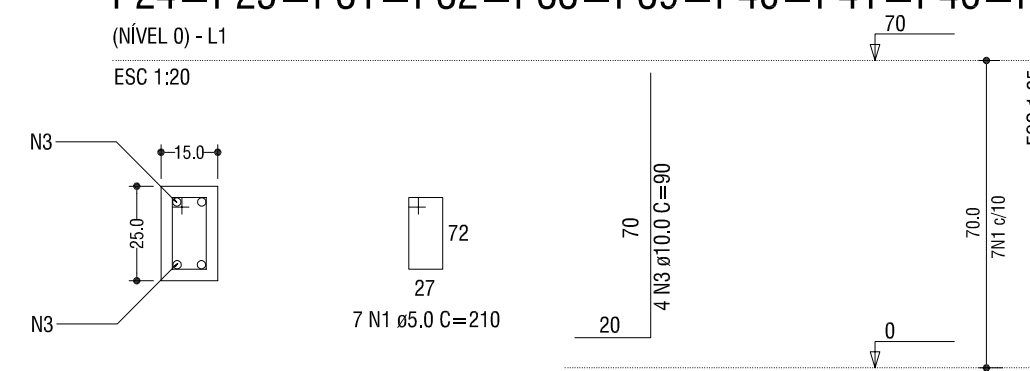
ESC 1:20



P24=P25=P31=P32=P33=P39=P40=P41=P46=P47

(NÍVEL 0) - L1

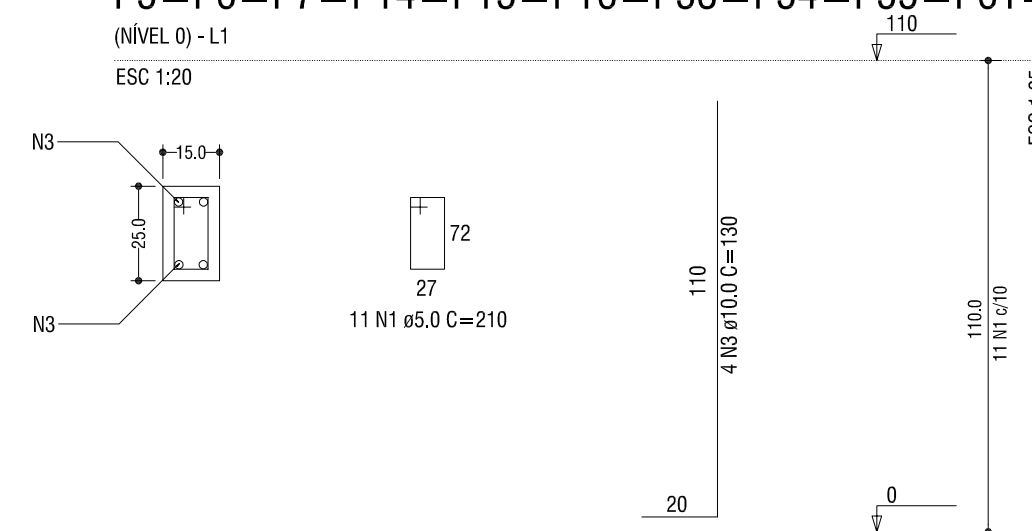
ESC 1:20



P5=P6=P7=P14=P15=P16=P53=P54=P55=P61=P62=P63

(NÍVEL 0) - L1

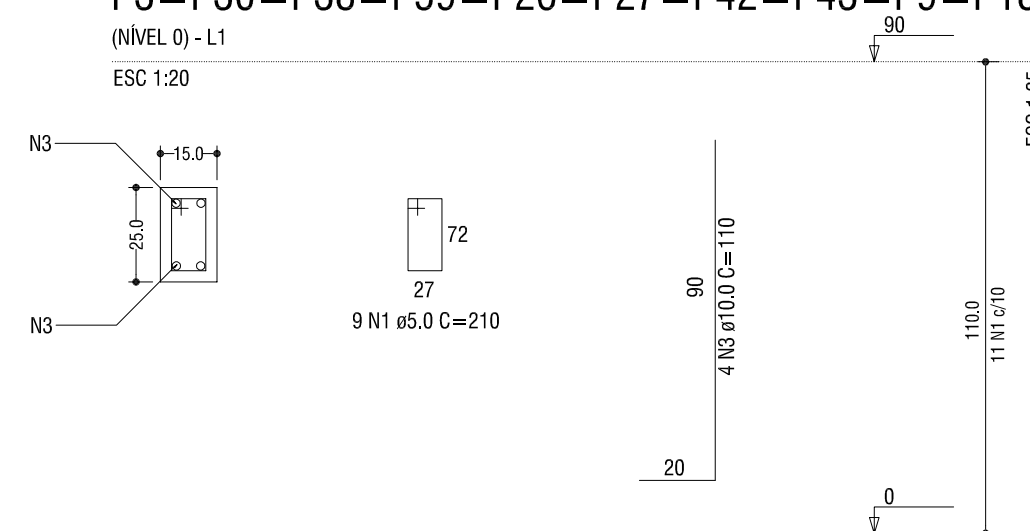
ESC 1:20



P3=P30=P38=P59=P26=P27=P42=P43=P9=P18=P48=P65

(NÍVEL 0) - L1

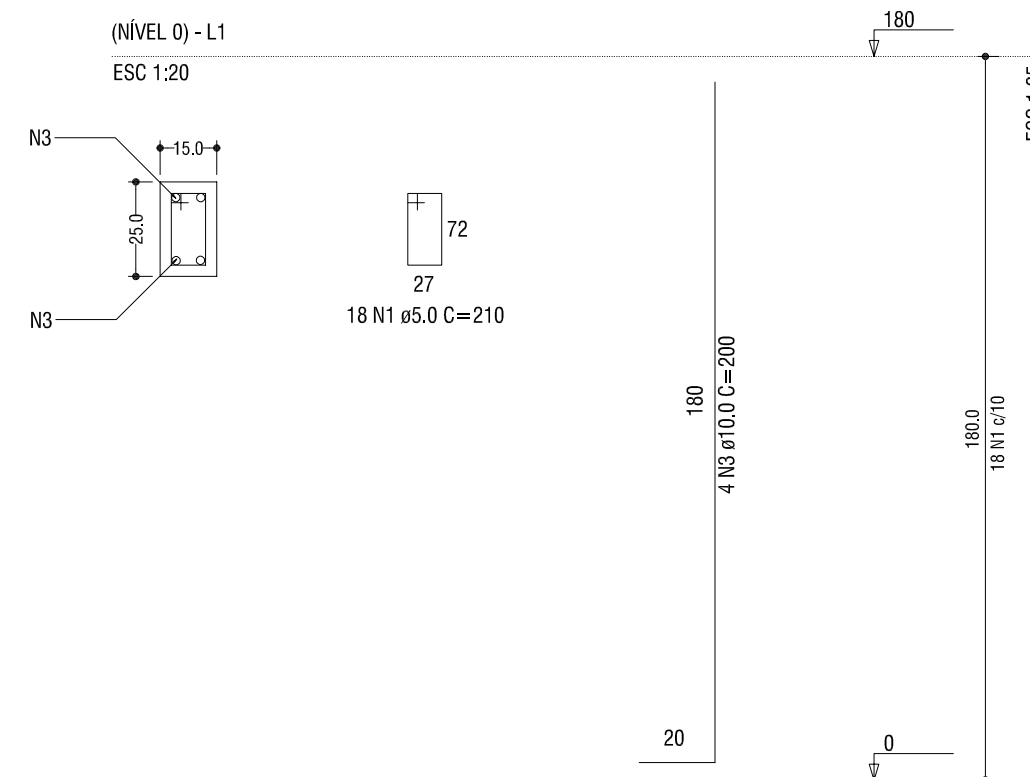
ESC 1:20



P1=P2=P22=P23=P28=P29=P34=P35=P36=P37=P44=P45=P57=P58=P10=P11=P12=P19=P20=P21=P66=P67=P68=P49=P50=P51

(NÍVEL 0) - L1

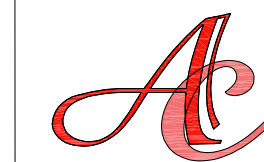
ESC 1:20



RESUMO DO AÇO				
AÇO	DIAM. (mm)	C. TOTAL (cm)	PESO UNIT. (kg/m)	PESO TOTAL (kg)
CA 50	10.0	37840	0,617	233,47
CA 60	5.0	170100	0,154	261,95

VOLUME DE CONCRETO (C-25) = 3,04 m³  
AREA DE FORMA = 33,0 m²

RELAÇÃO DO AÇO						
ELEMENTO	AÇO	N	DIAM (mm)	QUANT	C. UNIT (cm)	C. TOTAL (cm)
P4=P8=P13=P17=P52=P56=P60=P64	CA 60	1	5.0	32	210	6720
	CA 50	3	10.0	32	60	1920
P24=P25=P31=P32=P33=P39=P40=P41=P46=P47	CA 60	1	5.0	70	210	14700
	CA 50	3	10.0	40	90	3600
P3=P30=P38=P59=P26=P27=P42=P43=P9=P18=P48=P65	CA 60	1	5.0	108	210	22680
	CA 50	3	10.0	48	110	5280
P5=P6=P7=P14=P15=P16=P53=P54=P55=P61=P62=P63	CA 60	1	5.0	132	210	27720
	CA 50	3	10.0	48	130	6240
P1=P2=P22=P23=P28=P29=P34=P35=P36=P37=P44=P45=P57=P58=P10=P11=P12=P19=P20=P21=P66=P67=P68=P49=P50=P51	CA 60	1	5.0	468	210	98280
	CA 50	3	10.0	104	200	20800



Assessoria Técnica em Engenharia Civil Ltda.

email: engenharia@acassessoriatecnica.com.br

Fone: (44)3624-7775

Avenida Pirapó, 5538 - Zona 1A, CEP- 87.502.140, Umuarama - PR

PROJETO ESTRUTURAL

OBRA  
MELHORIAS NO COMPLEXO  
ESPORTIVO MUNICIPAL

COTEGIDO  
- DETALHES PILARES;  
- QUANTITATIVO.

FOLHA

02/04

PROPRIETARIO  
PREFEITURA MUNICIPAL DE PÉROLA.  
CNPJ: 81.478.133/0001-7

LOCAL  
RUA SOUZA NAVES/RUA ARAUJO LIMA - QUADRA 134/134A -  
PEROLA-PR

RESPONSÁVEIS

ESCALA INDICADA

DATA MAIO/2019

CONTRATO 1046191/2017

ADEMAR AMÉRICO CAMOSSATO  
ENGº CIVIL CREA 24.080-D/PR

MUNICÍPIO DE PÉROLA  
CNPJ: 81.478.133/0001-7